

SAMPLE



Manhole 8 downstream.

**2.2
Longitudinal fracture until 3.0m**



Manhole 8 downstream.

**2.4
Joint and multiple fracturing**



Manhole 8 downstream.

**6.9
Joint and multiple fracturing**

SAMPLE



Manhole 8 downstream.

**7.5
Offset joint and multiple fracturing**



Manhole 8 downstream.

**8.2
Multiple fracturing and joint**



Manhole 6 downstream

**5.0
Offset joint and multiple fracturing until 5.5m**

SAMPLE



Manhole 6 downstream

13.8
Offset joint and multiple fracturing



Manhole 7 downstream.

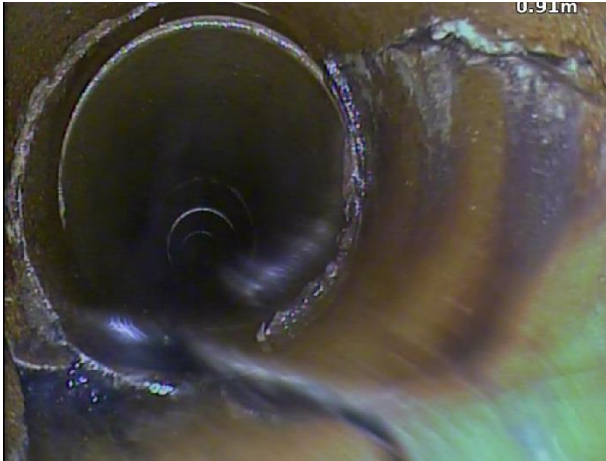
7.3
Multiple fracturing



Manhole 7 downstream.

7.6
Multiple fracturing

SAMPLE



Manhole 6 up branch connection 1.

**0.9
Multiple fracturing and offset joint**



Manhole 6 up branch connection 1.

**3.1
Joint and multiple fracturing**



Manhole 6 up branch connection 1.

**3.8
Offset joint, multiple fracturing and 90° bend upwards**

SAMPLE



Manhole 5 up branch connection 2

**0.1
Multiple fracturing and root penetration**



upstream from excavation on rear surface water main run

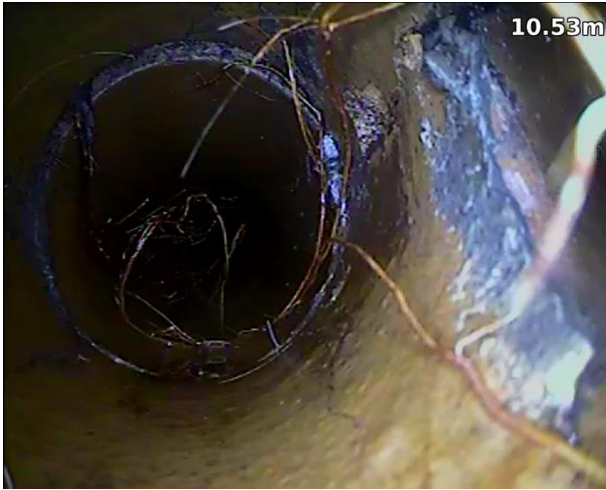
**5.4
Joint, multiple fracturing and root penetration**



upstream from excavation on rear surface water main run

7.3 Joint, multiple fracturing and root penetration

SAMPLE



upstream from excavation on rear surface water main run

10.6 Offset joint, root penetration and multiple fracturing



upstream from excavation on rear surface water main run

13.1 Joint, cement intrusion, root penetration and multiple fracturing



upstream from excavation on rear surface water main run

20.6 Offset joint, cement intrusion and pipework missing and root penetration

SAMPLE



upstream from excavation on rear surface water main run

**21.3
Offset joint, multiple fracturing, root penetration and slight bend to right**



upstream from excavation on rear surface water main run

**23.2
Offset joint, multiple fracturing and root penetration**



upstream from excavation on rear surface water main run

**27.3
Multiple fracturing, offset joint and root penetration**

SAMPLE



upstream from excavation on rear surface water main run

30.3 Multiple fracturing and root penetration



upstream from excavation on rear surface water main run

30.5

Offset joint, water holding in pipework which prevented a full view, branch connection at 3 o'clock to Rainwater Gully 5, multiple fracturing and root penetration



downstream from surface water excavation.

4.1

Joint, multiple fracturing and branch connection at 9 o'clock to Rainwater Gully 12

SAMPLE



downstream from surface water excavation.

**13.0
Multiple fracturing, pipework collapse and
branch connection at 3 o'clock to Rainwater
Gully 13**