

Reference Number

Site Location

Postcode



**Manhole D up branch connection 1.**

**1.8m**

**Hole in pipework at 9 o'clock and minor root penetration**



**Manhole D up branch connection 2 (high level).**

**0.0m**

**Longitudinal fracture to 0.1m**



**Manhole D downstream.**

**0.6m**

**Joint, longitudinal fracture and radial fracture**

Reference Number

Site Location

Postcode



**Manhole B up branch connection 3.**

**3.2m**

**Broken pipework with sections missing. Please note pipework is on verge of collapse**



**Manhole B up branch connection 1.**

**0.2m**

**Root mass which prevented passage of the camera. Run is approximately 4.0m in total to basin waste gully**



**Manhole E upstream to Rainwater Gully 2 (after high pressure water jetting).**

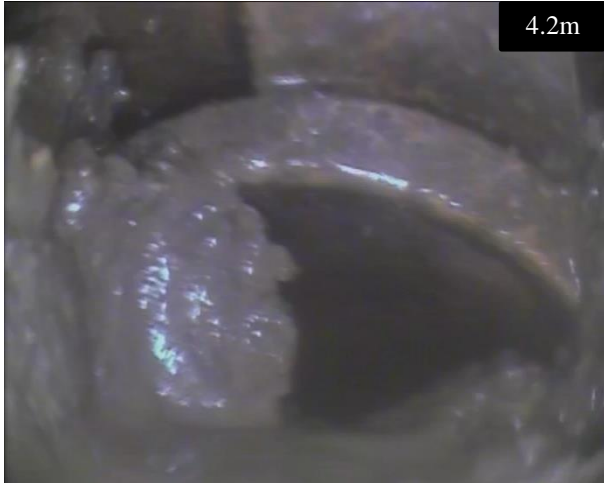
**3.4m**

**Multiple fracturing**

Reference Number

Site Location

Postcode



**Manhole E upstream to Rainwater Gully 2 (after high pressure water jetting).**

**4.2m**

**Severely dropped pipework which has collapsed. Run is approximately 5.0m to Rainwater Gully 2**



**Manhole E up branch connection to Rainwater Gully 1.**

**0.4m**

**Joint and root penetration**



**Manhole E up branch connection to Rainwater Gully 1.**

**1.0m**

**Severe dropped pipework at joint, multiple fracturing and heavy root penetration which prevented passage of the camera. Run is approximately 1.8m to gully**

Reference Number

Site Location

Postcode



**Manhole E downstream to Manhole F downstream.**

**0.4m**

**Multiple fracturing at 6 o'clock**



**Manhole E downstream to Manhole F downstream.**

**2.2m**

**Joint, longitudinal fracture and minor root penetration**



**Manhole E downstream to Manhole F downstream.**

**7.0m**

**Offset joint, root penetration and heavy debris deposits which prevented passage of the camera. Run is approximately 7.3m to Manhole F**